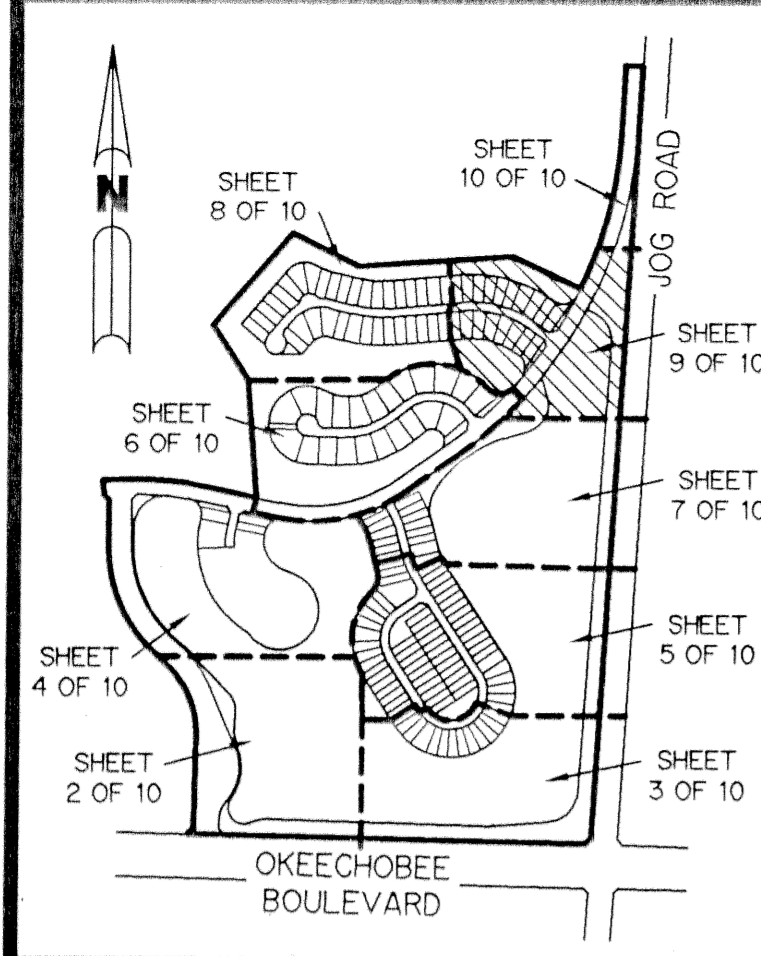


RIVERWALK - PLAT ONE

A PARCEL OF LAND LYING IN SECTION 21, TOWNSHIP 43 SOUTH, RANGE 42 EAST, CITY OF WEST PALM BEACH, PALM BEACH COUNTY, FLORIDA.

SHEET 9 OF 10 JANUARY, 1995

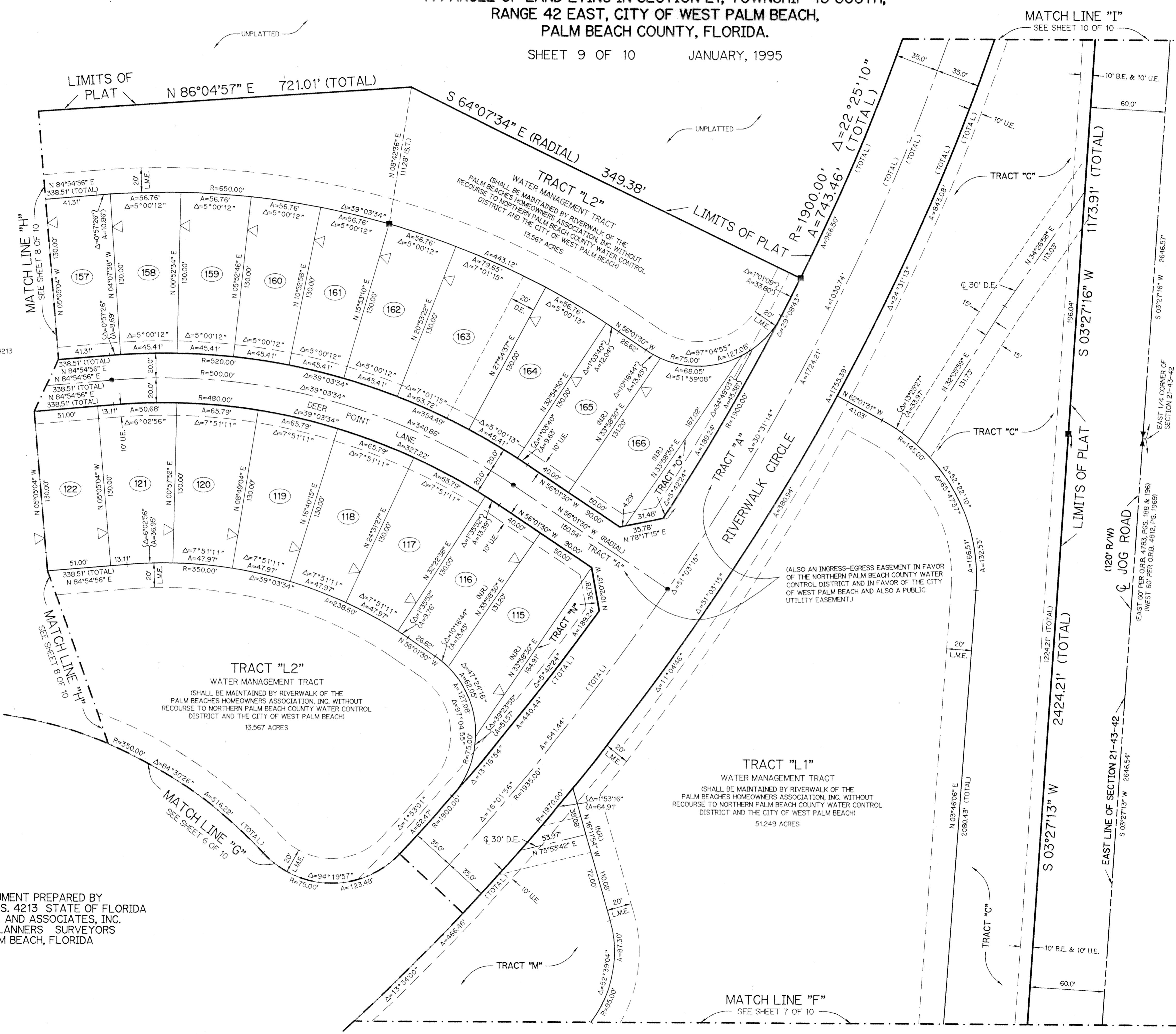


LEGEND:

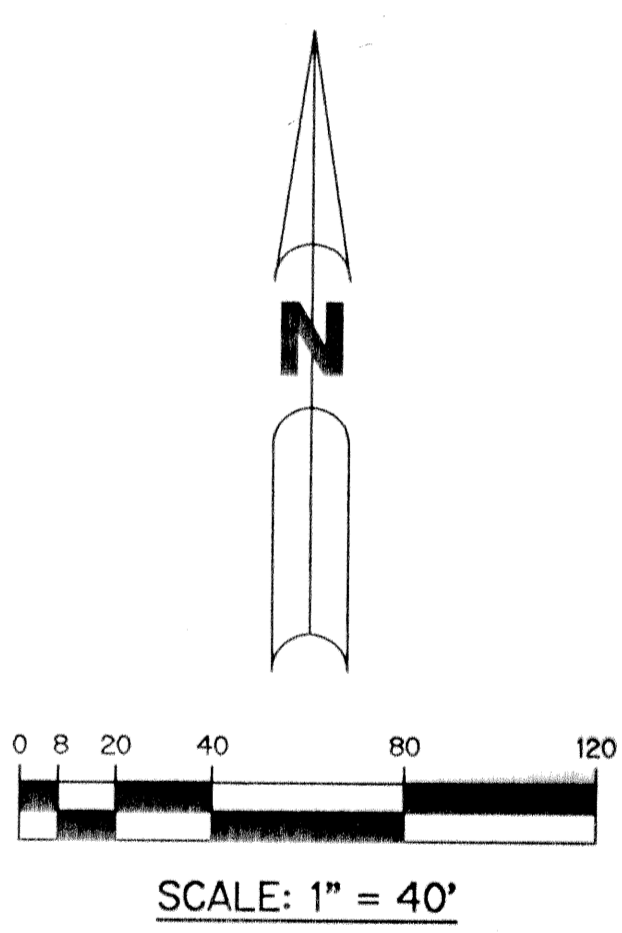
- - PERMANENT REFERENCE MONUMENT, PLS #4213
- - PERMANENT CONTROL POINT, PLS #4213
- Δ - DELTA ANGLE
- A - ARC LENGTH
- B.E. - BUFFER EASEMENT
- D.E. - DRAINAGE EASEMENT
- L.M.A.E. - LAKE MAINTENANCE ACCESS EASEMENT
- L.M.E. - LAKE MAINTENANCE EASEMENT
- L.W.D. - LAKE WORTH DRAINAGE DISTRICT
- N.R. - NOT RADIAL
- N.T.S. - NOT TO SCALE
- O.R.B. - OFFICIAL RECORD BOOK
- P.B. - PLAT BOOK
- R.E. - RIVERWALK EASEMENT
- PGS. - PAGES
- P.L.S. - PROFESSIONAL LAND SURVEYOR
- R - RADIUS
- R/W - RIGHT-OF-WAY
- S.T. - SURVEY TIE
- U.E. - UTILITY EASEMENT
- △ - INDICATES ZERO LOT LINE
- ⊗ - INDICATES COMMON LOT LINE

SUBDIVISION * Riverwalk-Plat One
 BOOK 74 PAGE 145 FLOOD MAP
 SE ZONING
 PUD NAME C/loop3
 2/14/95

THIS INSTRUMENT PREPARED BY
 PERRY C. WHITE P.L.S. 4213 STATE OF FLORIDA
 LAWSON, NOBLE AND ASSOCIATES, INC.
 ENGINEERS PLANNERS SURVEYORS
 WEST PALM BEACH, FLORIDA



VISTA CENTER OF PALM BEACH
 PLAT NO. 3
 P.B. 68, PGS. 128-134



VISTA CENTER OF PALM BEACH
 PLAT NO. 3
 P.B. 68, PGS. 128-134